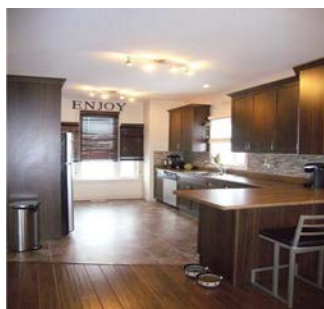


The Lavallee



Size: 1346 sq. ft.

Bedrooms: 3

Bathrooms: 2

Master Bed Location: Main Floor

Home Type: Bi-level

Features:

Designed from the inside out, to entertain you, "The Lavallee" is one of our favourite floor plans that was designed to flow.

From its front oriented kitchen with large counter for entertaining and gathering, to its open dining and living room, this home offers your imagination room to grow.

With a covered back deck looking out onto a beautifully grassed lawn, you will enjoy barbeque season to its finest.

Featuring a private wing to offset the three great bedrooms from the main of the home, this plan was built with functionality in mind. The Master Bedroom boasts a large walk in closet and ensuite with full sized standup shower.

The large front entry with room to sit and a double attached garage are just two more of this homes many fine qualities.

With a basement with endless possibilities, over reaching ceilings and the space to lavish your laid back recreation this 1346 sq ft home is sure to meet your needs.

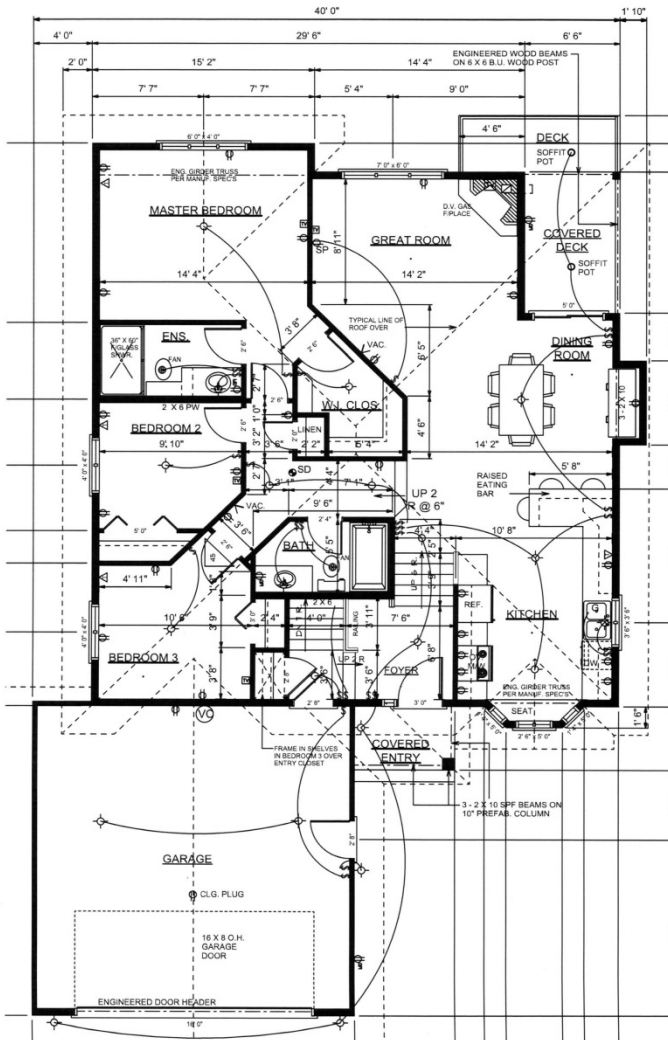


Gilles Huizinga

780-639-2444

www.sedgewoodhomes.ca

The Lavallee



Dimensions and specifications subject to change

Gilles Huizinga
780-639-2444

www.sedgewoodhomes.ca