

**1455 Wildrye Crescent
Creekside Estates**

The Chelsea



Address: 1455 Wildrye Crescent

Size: 1216 sq. ft.

Bedrooms: 3

Bathrooms: 2

Master Bed Location: Main Floor

Home Type: Bi-level

Features:

Our singular bilevel floor plan, and one of our most popular builds- "The Chelsea" has it all!

From its great front entrance, bold oversized walls for the drama of your personal collection of art, to its bright living room, and heavenly kitchen featuring an oversized pantry this plan is sure to please!

The raised bar counter in the kitchen functionally located close to the open dining room, is great for entertaining a crowd.

Large patio doors lead on to the partially covered deck, with stairs to the grassed back yard.

Three bedrooms- the master complete with a 4 piece ensuite and walk in closet, round out this floor plan.

Completing this 1216 Sqft home is the large open basement with loads of extra development room for bedrooms, family room. and tucked away laundry room.



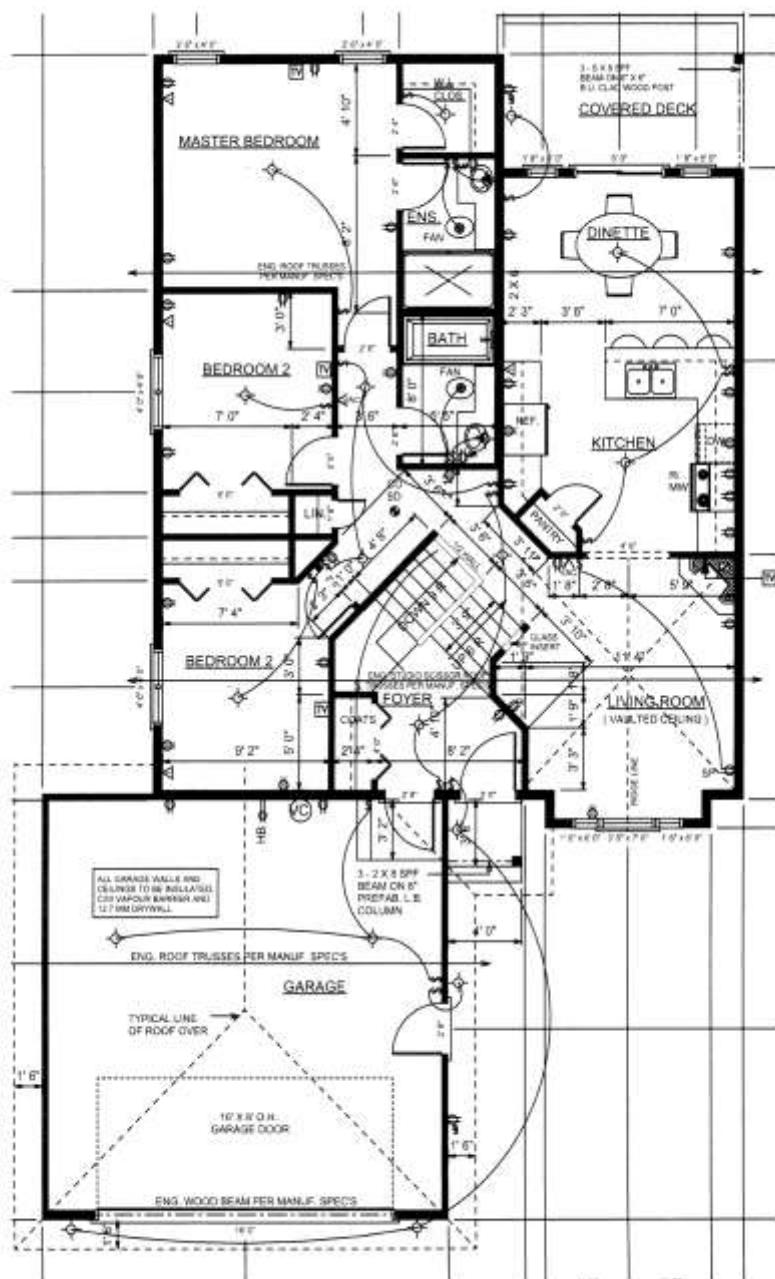
Gilles Huizinga

780-639-2444

www.sedgewoodhomes.ca

1455 Wildrye Crescent
Creekside Estates

The Chelsea



sedgewood
HOMES

Dimensions and specifications subject to change

Gilles Huizinga
780-639-2444

www.sedgewoodhomes.ca