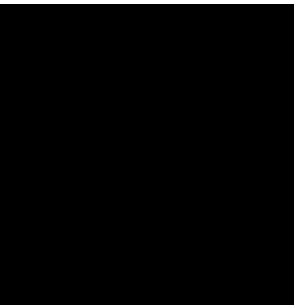


**2904 Yarrow Way**  
Creekside Estates

# The Edward



**Address:** 2904 Yarrow Way

**Size:** 1490 sq. ft.

**Bedrooms:** 3

**Bathrooms:** 2

**Master Bed Location:** 2nd Floor

**Home Type:** Bi-level

## Features:

Based off of one of our feature floor plans, "The Edward", this 1490 sq. ft. bi-level provides you with comfort, design, and functionality.

As you enter, you are greeted by a grand foyer with winding stairway to the heart of the home. The light colour scheme throughout offers a bright and open feel, with wall space that awaits your personal touches and creativity.

The open concept living room spills into the dining with a casual island and large kitchen - the perfect combination for a great entertainment space.

The completed back deck flows off of the dining room through the large patio doors.

The three steps up from the landing in the living room

leads to the private bedroom wing. The superlative master bedroom is complete with an ensuite with large shower, and a jetted tub. The second and third bedrooms up the hall come with nooks for a bench at the windows.

The basement is an opportunity in waiting. With 9' and 11' ceilings, only imagination would hold you back for a tremendous lower level development. A mudroom at the back door completes this home.

Designed for living.

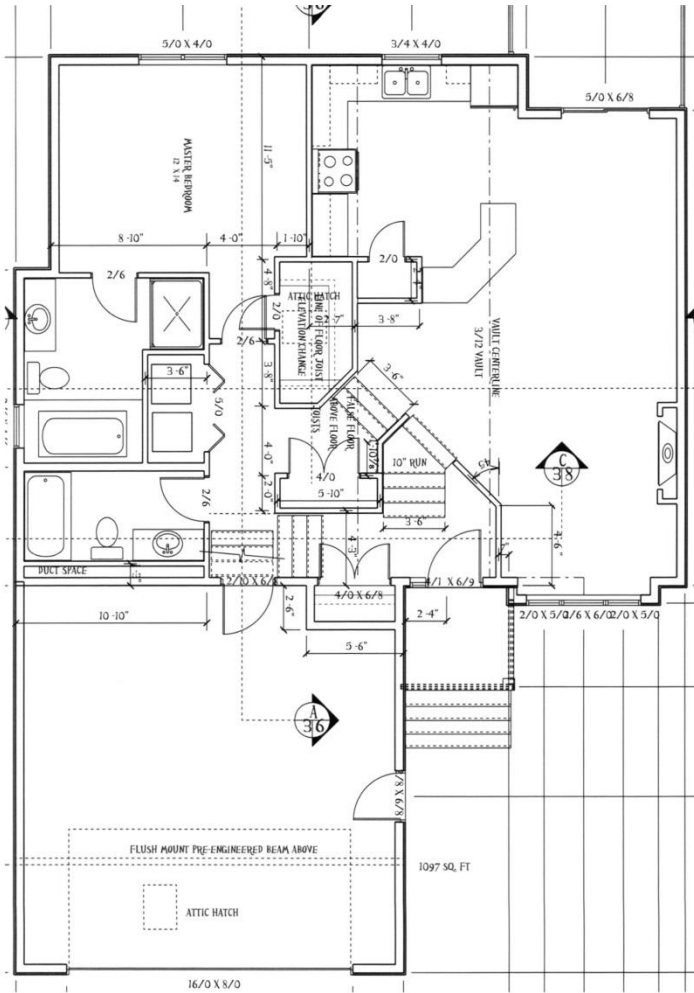


**Gilles Huizinga**  
**780-639-2444**

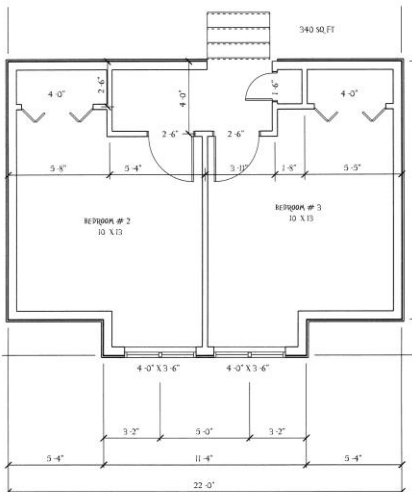
[www.sedgewoodhomes.ca](http://www.sedgewoodhomes.ca)

**2904 Yarrow Way**  
Creekside Estates

# The Edward



Dimensions and specifications subject to change



**Gilles Huizinga**  
**780-639-2444**

[www.sedgewoodhomes.ca](http://www.sedgewoodhomes.ca)