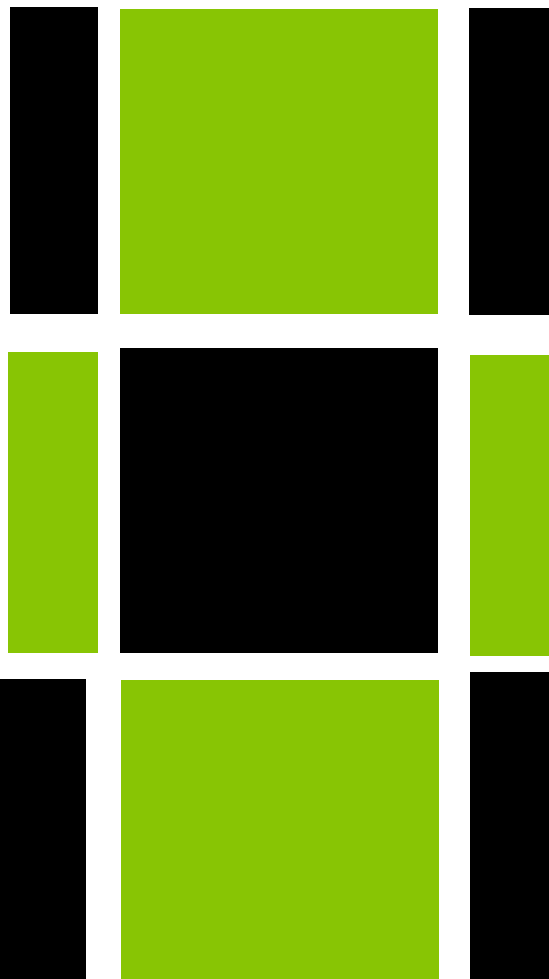




FRONT ELEVATION

Cambrian



Size: 1560 sq. ft.

Bedrooms: 3

Bathrooms: 2

Master Bed Location: Upper Floor

Home Type: Bi-level

Features:

Our newest plan, coming later in this year is a full bodied 1560 sqft two storey home.

This plan boasts an open concept main floor plan, with large bar counter, dining room and great room complete with a gas fireplace.

For your convenience, a laundry room is tucked away at the rear of the utility room.

The open staircase to the upper floor leads to a spacious master bedroom complete with full ensuite with ceramic tile shower and walk-in closet.

Two additional large bedrooms and a main bathroom round out the upstairs.

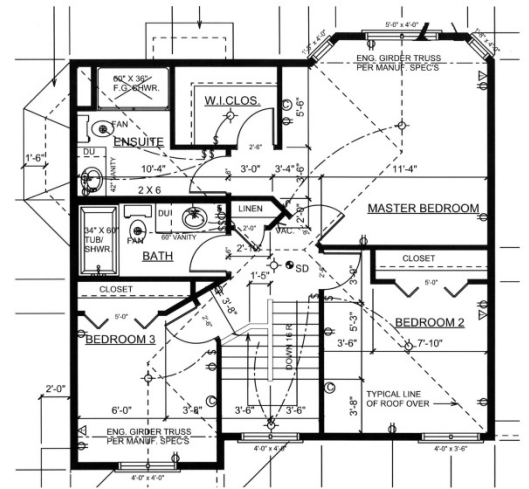
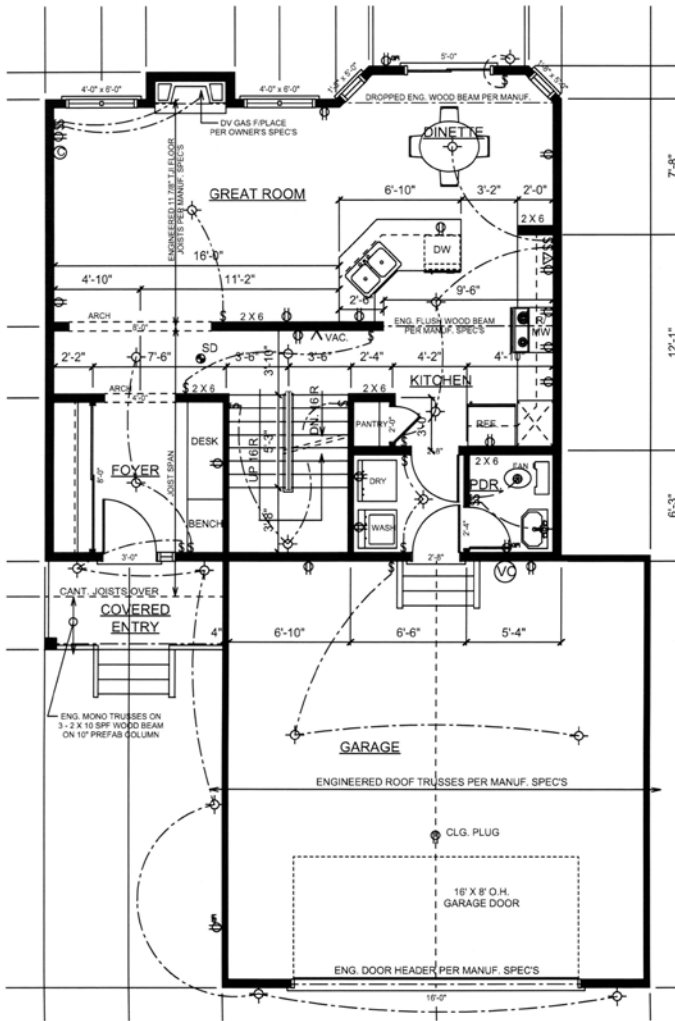
A large uninterrupted basement offers the potential for a tremendous family room development; with in floor heating, and side entrance, a secondary in-law suite can be accommodated.



Gilles Huizinga

780-639-2444

www.sedgewoodhomes.ca



Dimensions and specifications subject to change

Gilles Huizinga
780-639-2444

www.sedgewoodhomes.ca